

VT Economic Update

March 2022

Mathew Barewicz

Economic & Labor Market Information Division

Vermont Department of Labor

802.828.4153

Mathew.Barewicz@vermont.gov



Economic & Labor Market Information Division

Online at VTLMI.info

- Housed in the Vermont Department of Labor
- State partner to the Federal Government
- 100% federally funded
 - Thank you to the USDOL Employment & Training Administration!

Help Us Serve You Better
**Complete ELMI
Customer Survey**

Purpose: to produce, explain and disseminate economic data for the benefit of the State of Vermont, educational institutes, employers, students, job-seekers, researchers, and the general public.

DISCLAIMER

My opinions and my opinions alone...

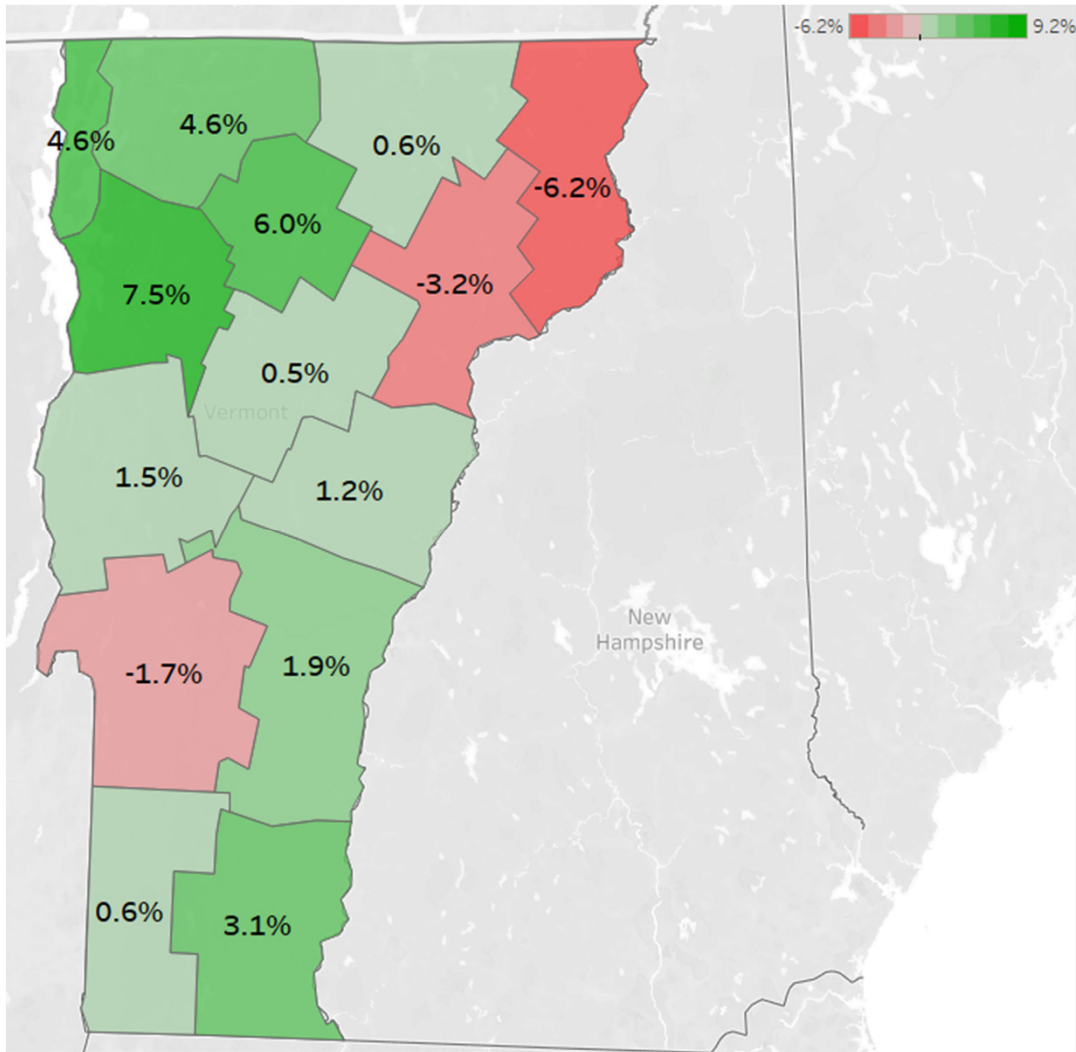
**...data wise, the pandemic hit at the
worst possible time --- early 2020**

2020 CENSUS – PARTIAL RESULTS

Vermont's Population:

We thought for a decade... ~626k

Turns out we were climbing to... **+643k!!!**



2020 CENSUS – PARTIAL RESULTS

**3 COUNTIES
SHOWED
POPULATION
DECLINES**

LOCAL AREA UNEMPLOYMENT STATISTICS (LAUS)

- Bureau of Labor Statistics program
- Major input into the LAUS model is data from the monthly Current Employment Survey (CPS)

The CPS is administered monthly by the US Census Bureau

- The CPS is a “managed panel” survey – 1,200 Vermont households
- Both the CPS and LAUS use the same definitions
 - Labor force...
 - Unemployed...

“Best Available Data” on Labor Force by County – to be updated 4/15/22

All Counties – showing declines

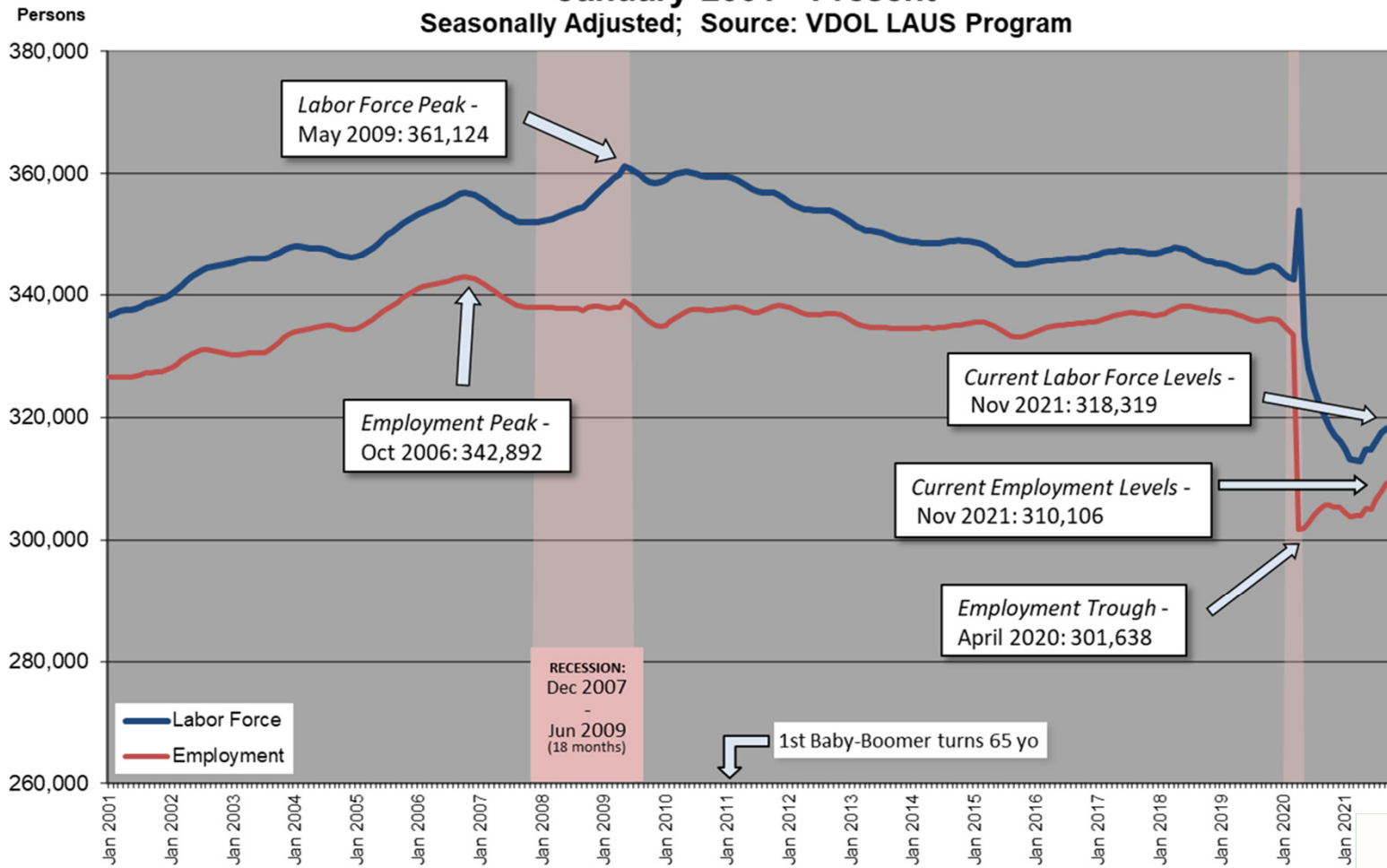
from each county's “peak” labor force:

8 Counties – showing declines > 10%

6 Counties – showing declines > 15%

Bennington, Caledonia, Essex,
Rutland, Windham, Windsor

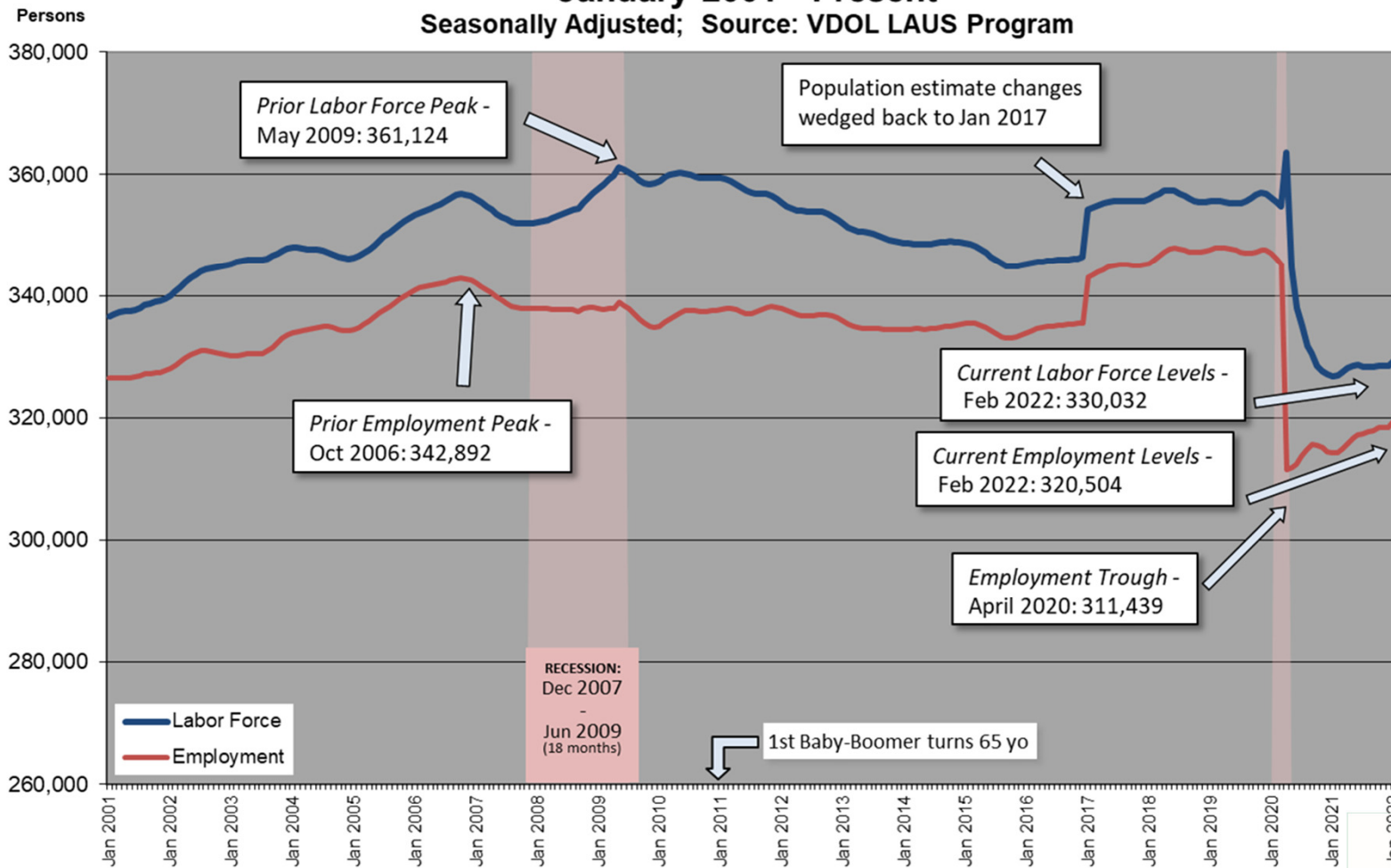
Vermont Labor Force & Employment
January 2001 - Present
 Seasonally Adjusted; Source: VDOL LAUS Program



BEFORE

Source: VT Dept. of Labor, www.VTLMI.info

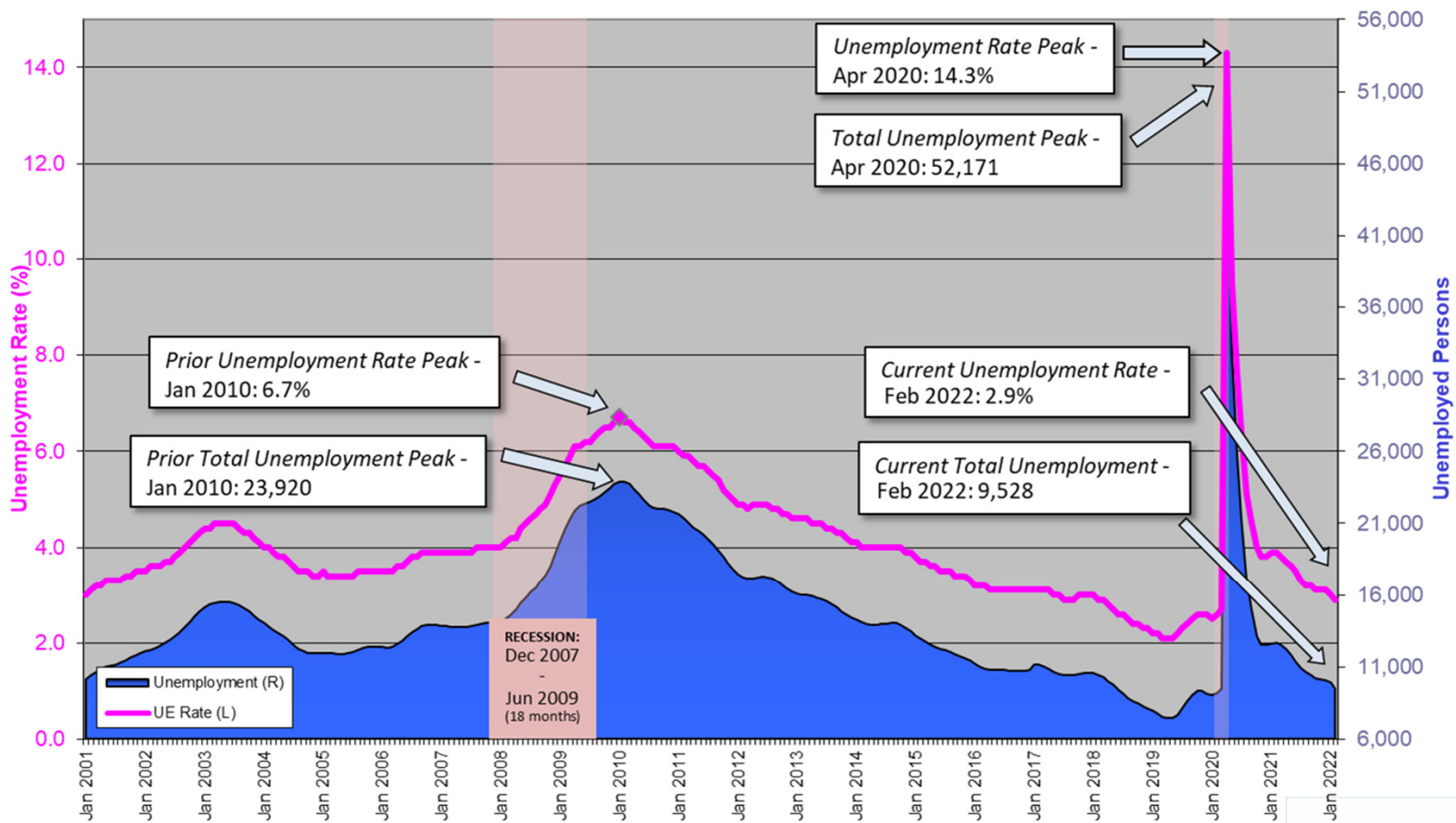
Vermont Labor Force & Employment
January 2001 - Present
 Seasonally Adjusted; Source: VDOL LAUS Program



Source: VT Dept. of Labor, www.VTLMI.info

FOR NOW...

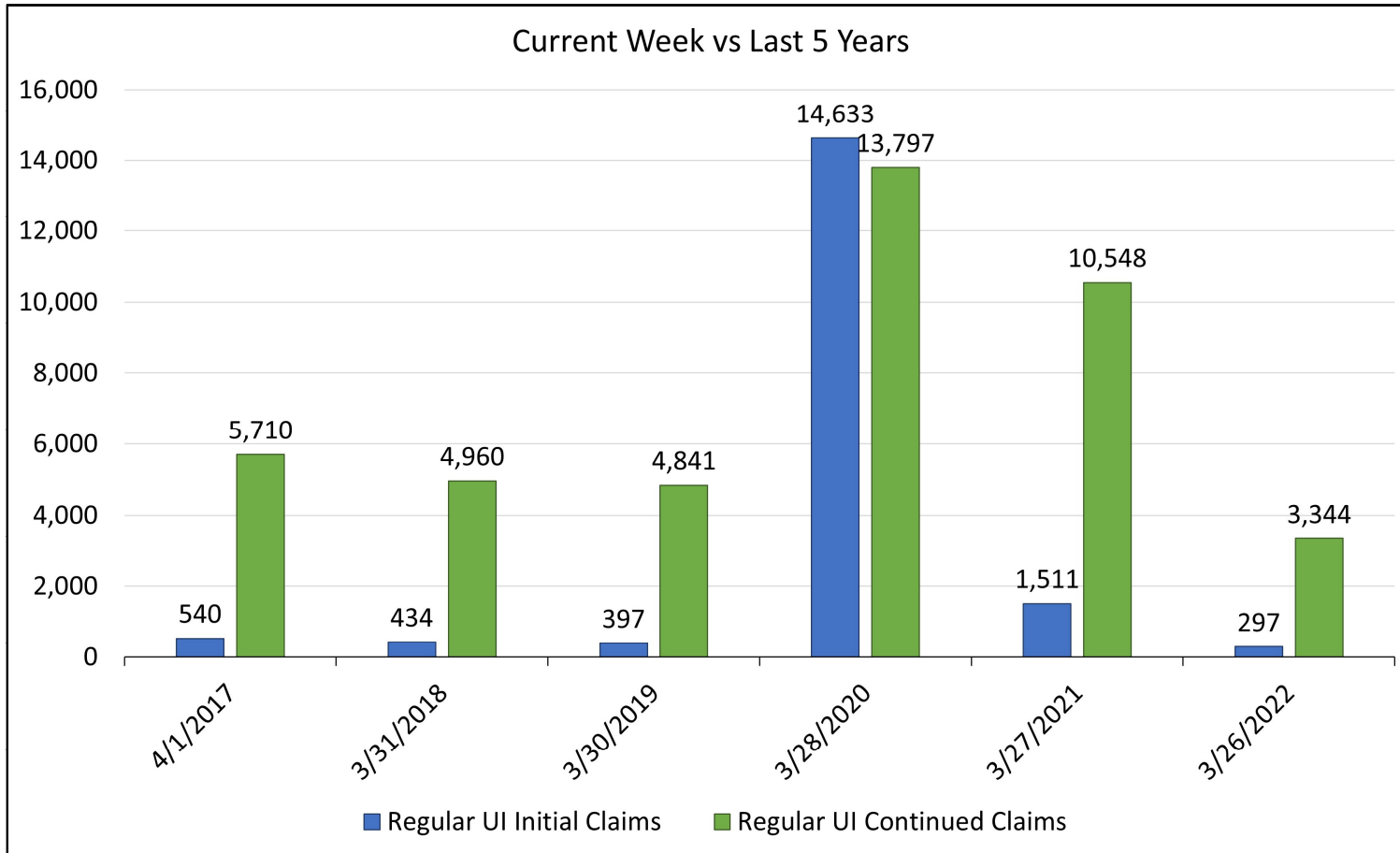
Vermont Unemployment & Unemployment Rate January 2001 - Present; Seasonally Adjusted



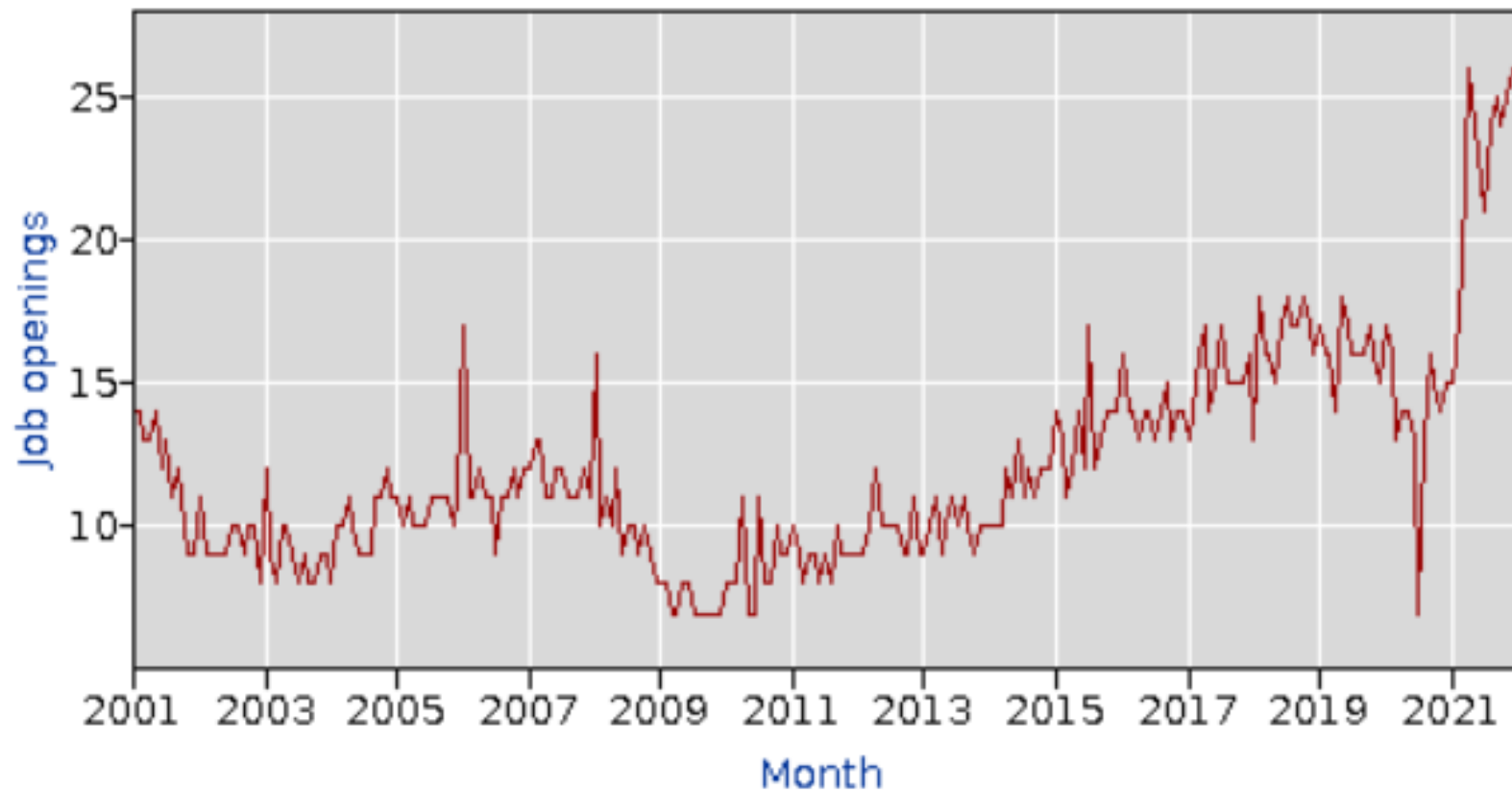
Source: VT Dept. of Labor, www.VTLMI.info



VERMONT UI CLAIMS DATA

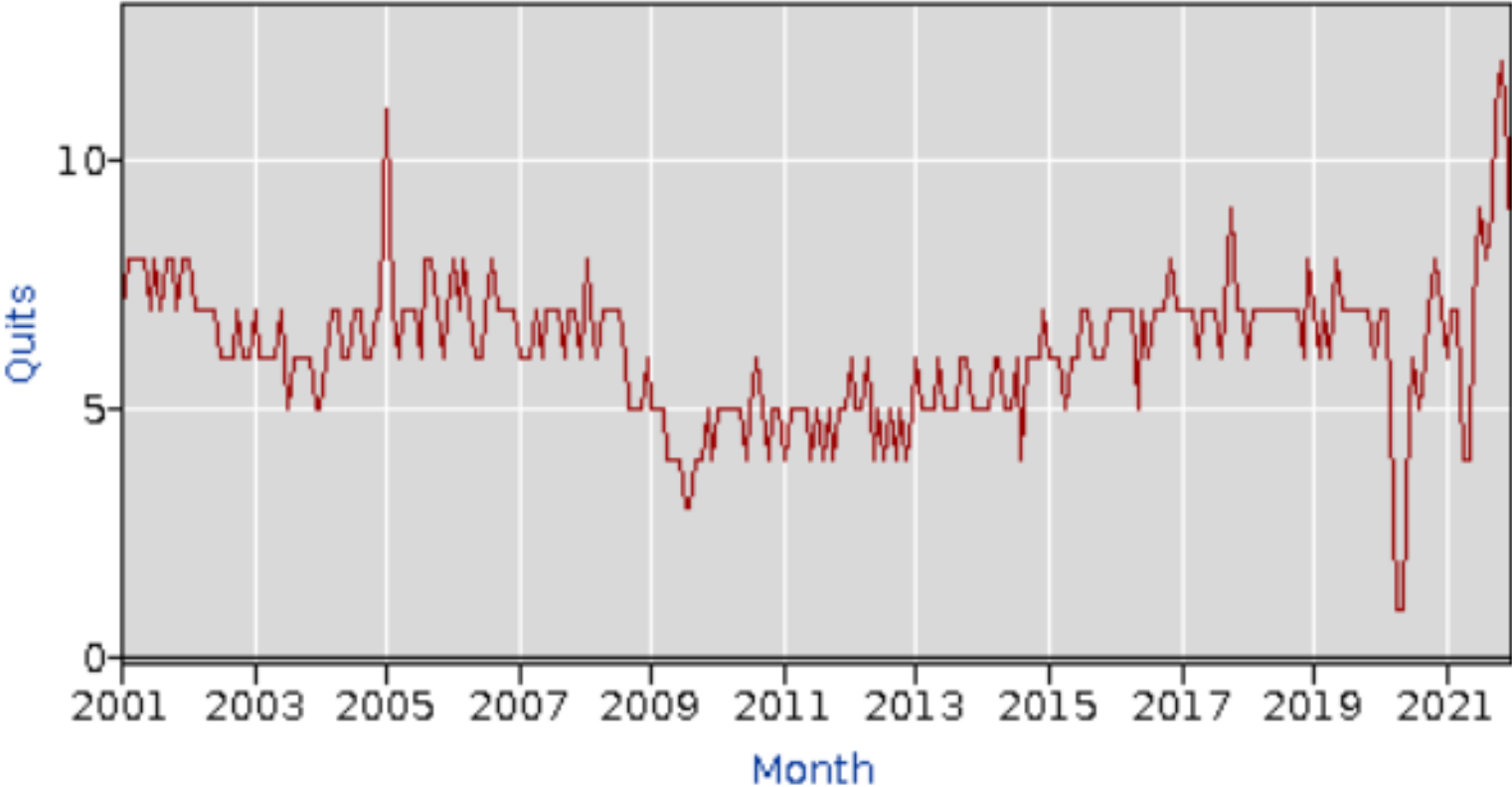


VERMONT JOB OPENINGS (000s)



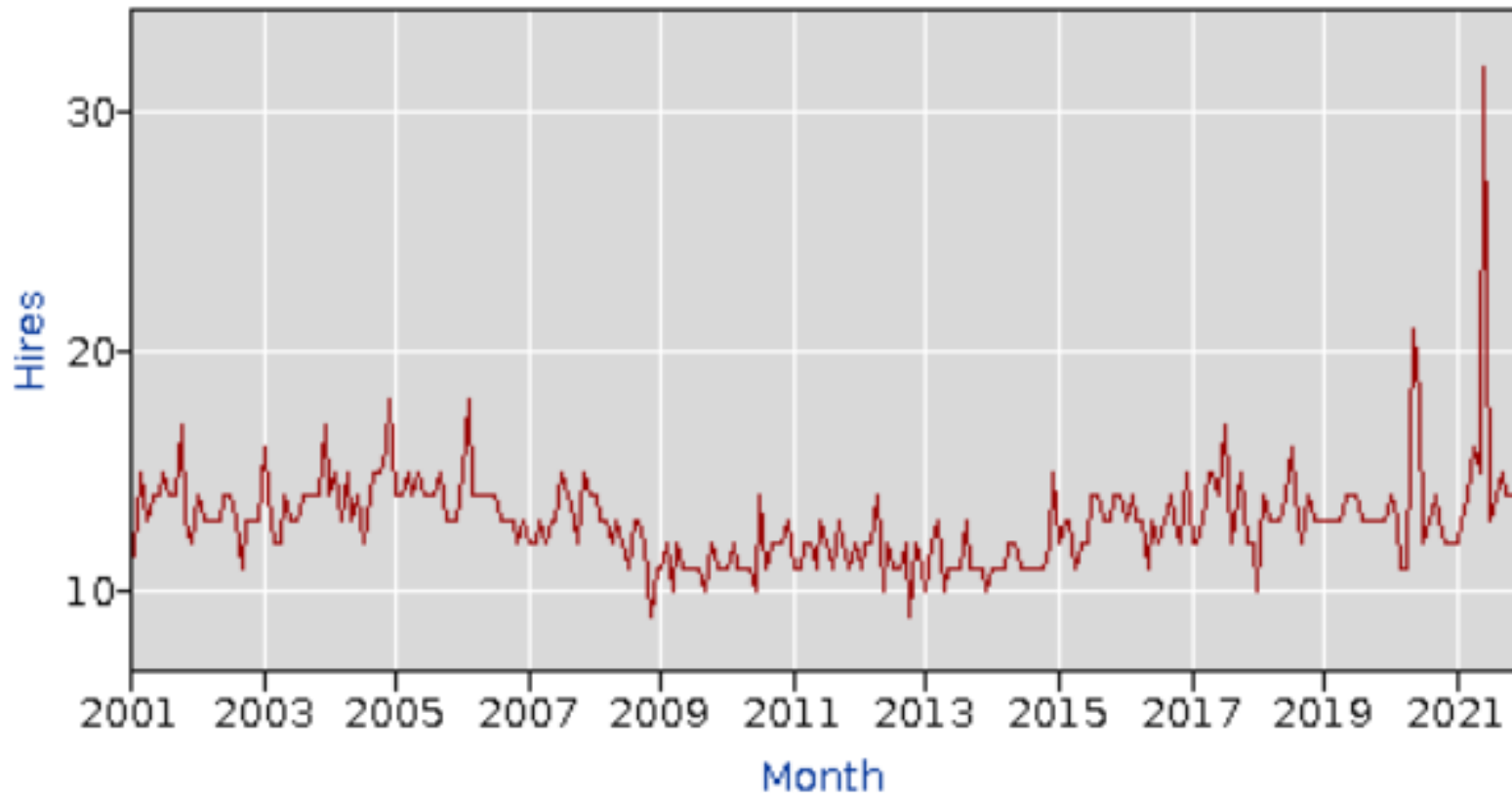
Source: BLS JOLTS

VERMONT QUILTS (000s)

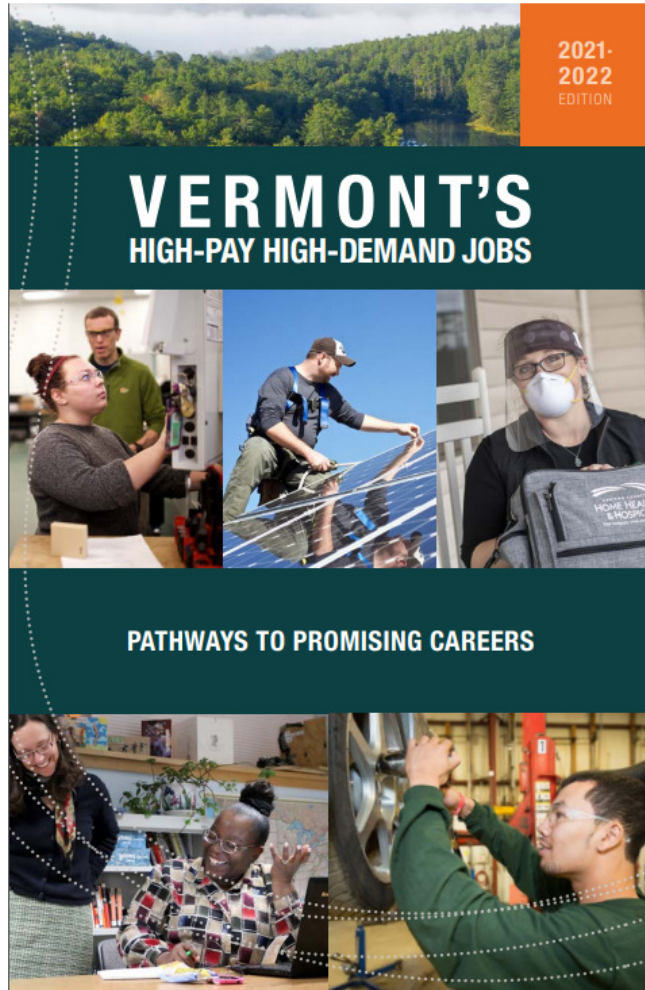


Source: BLS JOLTS

VERMONT HIRES (000s)



Source: BLS JOLTS



Version 4
**A Continued Partnership
with the McClure
Foundation
Highlighting E&LMI Data**

Found online:

VTLMI.info

in the upper right

OR McClureVT.org

Short-term career training programs can be smart investments. Is one of **Vermont's top 7** right for you?

BEST BET CAREER TRAINING PROGRAMS FOR VERMONTERS

2021 EDITION

Practical Nursing (LPN) Program

Bookkeeping Certificate

Electrical & Plumbing Apprenticeships

IT Service Desk Specialist Certificate

Each of these short-term career training programs leads to a **recognized credential** and a great shot at a **good-paying Vermont job within 18 months**. Plus, they're all part of career pathways that lead to even higher-paying jobs down the road.

<<< **New This Edition**

Found online:

VTLMI.info

in the upper right

OR

McClureVT.org

Help Us Serve You Better
**Complete ELMI
Customer Survey**

Thank you!
Provide feedback at VTLMI.info



Mathew Barewicz
Economic & Labor Market Information Division
Vermont Department of Labor
802.828.4153
Mathew.Barewicz@vermont.gov

